

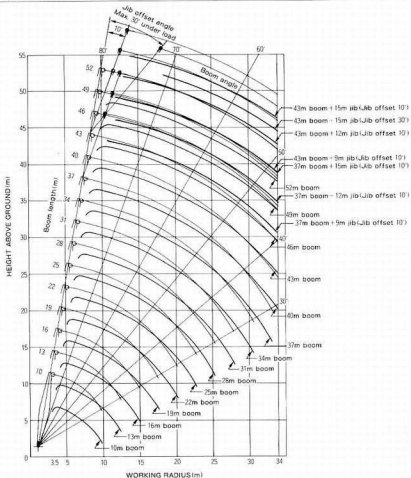
CX500

HYDRAULIC CRAWLER CRANE

Specifications

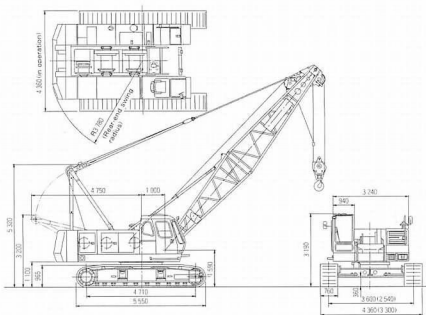
HITACHI

■ Working Ranges



■Dimensions

Unit : mm



Dimensions shown in () are with tracks retracted

■Specifications

Maximum rated load	metric ton × m	50 × 3.8
Basic boom length	m	10
Max. boom length	m	52
Jib length	m	6 - 35
Max. boom with jib length	m	43 - 15
Main hoist drum	m/min	* 100/65/30
Aux. hoist drum	m/min	* 100/65/30
Boom hoist drum	m/min	* 53
Swing speed	min ⁻¹ /rpm	4.0/4.0
Travel speed	km/h	* 1.7/1.4
Gradeability	% (°)	40/22
Engine model		Hino H07CT
Rated power	kW/min ⁻¹ (PS/rpm)	132.4/2,000 (180/2,000)
Ground pressure	kPa (kgf/cm ²)	63.7 (6.55)
Operating weight	metric ton	49.9
		(Equipped with 10m boom and 50ton capacity hook)

NOTE: Data expressed above are in SI units (International System of Unit).

followed by data in conventional units in ()

* Data in the crane mode will vary with the load

Jib length (m)	40								43							
	6		9		12		15		6		9		12		15	
11.9	6.50															
12.0	6.50	11m+5.3t	13m+5.3t						7m+3.3t		8m+5.0t					
14.0	6.50	6.50	5.00	5m+5.3t	5.2m+4.0t			8.2m+1.8t	6.50	4.5m+5.2t	5.00		10m+1.0t		10m+3.0t	
16.0	6.30	6.50	5.00	5.00	4.30	7.1m+4.0t	3.30		6.25	6.45	5.00	1.3m+1.2t	4.10		3.30	
18.0	5.30	5.50	5.00	5.00	4.30	4.10	3.30	8.2m+1.1t	5.20	5.40	5.00	5.00	4.10	6.3m+1.8t	3.30	
20.0	4.50	4.65	4.60	4.65	4.10	4.10	3.30	3.30	4.40	4.60	4.90	4.75	4.10	4.10	3.30	2.3m+3.3t
22.0	3.90	4.00	3.95	4.15	4.05	4.10	3.30	3.30	3.80	3.90	3.85	4.10	3.95	4.10	3.30	3.30
24.0	3.35	3.45	3.45	3.60	3.50	3.75	3.30	3.15	3.25	3.40	3.35	3.50	3.40	3.65	3.30	3.20
26.0	2.90	3.00	3.00	3.15	3.05	3.25	3.10	3.00	2.80	2.95	2.90	3.05	2.95	3.20	3.00	3.05
28.0	2.55	2.65	2.60	2.75	2.70	2.85	2.75	2.50	2.40	2.55	2.50	2.65	2.60	2.80	2.65	2.90
30.0	2.20	2.30	2.25	2.40	2.35	2.50	2.40	2.60	2.05	2.15	2.15	2.30	2.20	2.45	2.30	2.55
32.0	1.90	1.95	1.95	2.10	2.00	2.20	2.10	2.30	1.75	1.85	1.85	2.00	1.90	2.10	1.95	2.55
34.0	1.60	1.70	1.70	1.80	1.75	1.90	1.80	2.00	1.50	1.55	1.55	1.70	1.65	1.80	1.70	1.95

- NOTES: 1. The rated loads shown do not exceed 70% of tipping load with the machine on firm level ground, and are not less than 1.15 times over-front stability stipulated by the mobile crane construction standards.
2. To calculate the maximum load that can actually be lifted, deduct weight of all lifting accessories, such as main hook, from figures shown above.

Hook Capacity	Weight
50.0ton	0.61ton
30.0ton	0.36ton
15.0ton	0.32ton
6.5ton	0.18ton

3. Working radius is the horizontal distance from the swing center to the center of gravity of a lifted load.
4. Jib offset angle to main boom is set to loading condition.
5. The counterweight is 17.3ton.
6. Be sure to fully extend the side frames before operating the machine.


Crane Ratings (Jib in 360° Working Area)

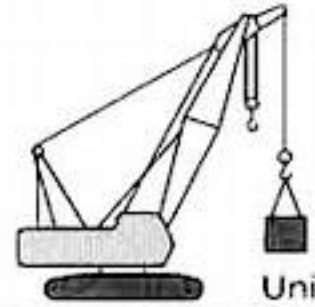
Unit: metric ton

Boom length (m) Jib length (m)	22												25				
	6		9		12		15		6		9		12		15		
Crane capacity (metric ton)	10	30	10	30	10	30	10	30	10	30	10	30	10	30	10	30	
8.1	6.50									10m+10k							
9.0	6.50	10m+10k	10m+10k						6.50		10m+10k						
10.0	6.50	6.50	5.00	10m+10k	10m+10k			10m+10k	6.50	10m+10k	5.00		10m+10k				
12.0	6.50	6.50	5.00	5.00	4.10	4.10	10m+10k	3.30	6.50	6.50	5.00	10m+10k	4.10				
14.0	6.50	6.50	5.00	5.00	4.10	4.10	3.30	3.30	6.50	6.50	5.00	5.00	4.10	10m+10k	3.30		
16.0	6.50	6.50	5.00	5.00	4.10	4.10	3.30	3.30	6.50	6.50	5.00	5.00	4.10	4.10	3.30	10m+10k	
18.0	5.90	5.90	5.00	5.00	4.10	4.00	3.30	3.25	5.70	5.85	5.00	5.00	4.10	4.10	3.30	3.30	
20.0	5.90	5.10	5.00	4.85	4.10	3.75	3.30	3.05	4.95	5.05	4.40	5.00	4.10	3.85	3.30	3.15	
22.0	4.40	4.45	4.45	4.95	4.10	3.55	3.30	2.85	4.30	4.40	3.85	4.50	4.10	3.65	3.30	2.95	
24.0	3.90	3.90	3.95	4.00	4.00	3.35	3.30	2.70	3.80	3.85	3.45	3.55	3.90	3.45	3.30	2.90	
26.0	3.45	3.50	3.50	3.60	3.55	3.30	3.30	2.55	3.35	3.40	3.05	3.50	3.50	3.40	3.30	2.65	
28.0	3.1m+10k	3.1m+10k	3.15	3.20	3.20	3.05	3.10	2.45	3.00	3.05	2.75	3.15	3.10	3.20	3.15	2.55	
30.0			3.1m+10k	3.1m+10k	2.90	2.95	2.90	2.30	3.1m+10k	3.1m+10k	3.1m+10k	2.80	2.90	2.90	2.85	2.45	
32.0					3.1m+10k	2.65	2.65	2.25				2.40	2.55	2.60	2.55	2.15	
34.0						3.1m+10k	2.40	2.20					3.1m+10k	2.20	2.35	2.30	2.25

Boom length (m) Jib length (m)	28												31			
	6		9		12		15		6		9		12		15	
Crane capacity (metric ton)	10	30	10	30	10	30	10	30	10	30	10	30	10	30	10	30
9.4	6.50															
10.0	6.50	10m+10k	10m+10k			10m+10k			6.50	10m+10k	10m+10k					
12.0	6.50	6.50	5.00	5.00	4.10		10m+10k		6.50	6.50	5.00	10m+10k	5.00		10m+10k	
14.0	6.50	6.50	5.00	5.00	4.10	10m+10k	3.30		6.50	6.50	5.00	5.00	4.10	10m+10k	3.30	
16.0	6.50	6.50	5.00	5.00	4.10	4.10	3.30	10m+10k	6.50	6.50	5.00	5.00	4.10	4.10	3.30	10m+10k
18.0	5.60	5.75	5.00	5.00	4.10	4.10	3.30	3.30	5.55	5.70	5.00	5.00	4.10	4.10	3.30	3.30
20.0	4.85	4.95	4.90	5.00	4.10	4.00	3.30	3.20	4.75	4.90	4.85	5.00	4.10	4.10	3.30	3.30
22.0	4.20	4.30	4.25	4.40	4.10	3.75	3.30	3.05	4.15	4.20	4.20	4.35	4.10	3.90	3.30	3.10
24.0	3.70	3.75	3.75	3.85	3.80	3.60	3.30	2.90	3.60	3.70	3.70	3.80	3.75	3.70	3.30	2.95
26.0	3.25	3.30	3.30	3.40	3.40	3.40	3.30	2.75	3.20	3.25	3.25	3.35	3.30	3.45	3.30	2.80
28.0	2.90	2.95	2.95	3.05	3.00	3.10	3.05	2.60	2.80	2.85	2.90	2.95	2.95	3.05	3.00	2.70
30.0	2.60	2.60	2.65	2.70	2.70	2.80	2.75	2.50	2.50	2.55	2.55	2.65	2.60	2.75	2.65	2.60
32.0	1.3m+10k	1.3m+10k	2.35	2.40	2.40	2.50	2.45	2.40	2.45	2.45	2.30	2.35	2.35	2.45	2.40	2.50
34.0			2.05	2.10	2.20	2.25	2.20	2.30	3.1m+10k	1.95	2.05	2.10	2.10	2.20	2.15	2.25

Boom length (m) Jib length (m)	34												37			
	6		9		12		15		6		9		12		15	
Crane capacity (metric ton)	10	30	10	30	10	30	10	30	10	30	10	30	10	30	10	30
10.6	6.50		10m+10k							10m+10k						
12.0	6.50	10m+10k	5.00			10m+10k			6.50	10m+10k	10m+10k			10m+10k		
14.0	6.50	6.50	5.00	10m+10k	4.10		3.30		6.50	6.50	5.00	10m+10k	4.10		10m+10k	
16.0	6.45	6.50	5.00	5.00	4.10	10m+10k	3.30		6.35	6.50	5.00	5.00	4.30	10m+10k	3.30	
18.0	5.45	5.60	5.00	5.00	4.10	4.10	3.30	10m+10k	5.35	5.50	5.00	5.00	4.10	4.10	3.30	10m+10k
20.0	4.85	4.80	4.75	4.95	4.10	4.10	3.30	3.30	4.55	4.70	4.65	4.85	4.10	4.10	3.30	3.30
22.0	4.05	4.15	4.10	4.30	4.10	3.95	3.30	3.20	3.95	4.05	4.00	4.20	4.10	4.05	3.30	3.25
24.0	3.50	3.60	3.60	3.75	3.65	3.80	3.30	3.05	3.40	3.50	3.50	3.65	3.55	3.80	3.30	3.10
26.0	3.10	3.15	3.15	3.25	3.20	3.40	3.25	2.90	3.00	3.05	3.05	3.20	3.10	3.30	3.15	2.95
28.0	2.70	2.80	2.80	2.90	2.85	3.00	2.90	2.75	2.60	2.70	2.70	2.80	2.75	2.90	2.80	2.65
30.0	2.40	2.45	2.45	2.55	2.50	2.65	2.55	2.65	2.25	2.25	2.35	2.45	2.40	2.55	2.45	2.65
32.0	2.10	2.15	2.15	2.25	2.25	2.35	2.30	2.45	1.95	2.05	2.05	2.15	2.10	2.25	2.15	2.35
34.0	1.85	1.85	1.90	2.00	1.95	2.10	2.00	2.15	1.70	1.75	1.80	1.90	1.85	2.00	1.90	2.10

Continued on next page



Unit: metric ton

■ Crane Ratings (Auxiliary Jib in 360° Working Area)

Working radius (m)	Boom length (m)												
	13	16	19	22	25	28	31	34	37	40	43	46	49
4.5	4.7m × 6.50t												
5.0	6.50	5.2m × 6.50t											
5.5	6.50	6.50	5.8m × 6.50t										
6.0	6.50	6.50	6.50	6.4m × 6.50t									
7.0	6.50	6.50	6.50	6.50	6.50	7.5m × 6.50t							
8.0	6.50	6.50	6.50	6.50	6.50	6.50	8.1m × 6.50t	8.7m × 6.50t					
9.0	6.50	6.50	6.50	6.50	6.50	6.50	6.50	6.50	9.2m × 6.50t	9.8m × 6.50t			
10.0	6.50	6.50	6.50	6.50	6.50	6.50	6.50	6.50	6.50	6.50	10.4m × 6.50t	10.9m × 6.50t	11.5m × 6.50t
12.0	6.50	6.50	6.50	6.50	6.50	6.50	6.50	6.50	6.50	6.50	6.50	6.50	6.50
14.0	13.5m × 6.50t	6.50	6.50	6.50	6.50	6.50	6.50	6.50	6.50	6.50	6.50	6.50	6.50
16.0		6.50	6.50	6.50	6.50	6.50	6.50	6.45	6.35	6.35	6.25	6.15	6.05
18.0		16.1m × 6.50t	5.85	5.75	5.70	5.60	5.55	5.45	5.35	5.30	5.20	5.15	5.05
20.0			18.7m × 5.55t	5.00	4.95	4.80	4.75	4.65	4.55	4.55	4.45	4.35	4.25
22.0				21.3m × 4.55t	4.30	4.20	4.15	4.05	3.95	3.90	3.80	3.70	3.65
24.0					23.9m × 3.80t	3.70	3.65	3.55	3.45	3.40	3.30	3.20	3.10
26.0						3.30	3.20	3.10	3.00	2.95	2.85	2.75	2.65
28.0						26.5m × 3.20t	2.85	2.75	2.65	2.60	2.45	2.35	2.25
30.0							29.1m × 2.65t	2.45	2.30	2.25	2.10	2.00	1.90
32.0								31.7m × 2.20t	2.05	1.95	1.80	1.70	1.60
34.0									1.80	1.65	1.55	1.45	1.30

- NOTES
- The rated loads shown do not exceed 78% of tipping load with the machine on firm level ground, and are not less than 1.15 times over-front stability stipulated by the mobile crane construction standards.
 - To calculate the maximum load that can actually be lifted, deduct weight of all lifting accessories, such as main hook, from figures shown above

Hook Capacity	Weight
50.0ton	0.61ton
30.0ton	0.36ton
15.0ton	0.32ton
6.5ton	0.18ton

- Working radius is the horizontal distance from the swing center to the center of gravity of a lifted load.
- The counterweight is 17.3ton.
- Be sure to fully extend the side frames before operating the machine.



Unit: metric ton

Crane Ratings (Main Boom in 360° Working Area)

Working radius (m)	Boom length (m)															
	10	13	15	19	22	25	28	31	34	37	40	43	46	49	52	
3.5	50.00	38.00														
4.0	48.05	47.85	35.00													
4.5	40.10	39.80	35.75													
5.0	33.75	33.70	33.60	33.60												
5.5	29.25	29.15	28.10	29.05	28.70											
6.0	25.75	25.70	25.60	25.60	25.50	25.00	25.00									
7.0	20.75	20.70	20.60	20.55	20.50	20.45	20.35	20.35								
8.0	17.35	17.25	17.20	17.15	17.05	17.00	16.95	16.90	16.80							
9.0	14.90	14.80	14.70	14.65	14.55	14.50	14.45	14.45	14.30	14.20						
10.0	12.90	12.90	12.80	12.75	12.65	12.60	12.50	12.50	12.40	12.30	12.20	12.20	12.10	12.00	11.90	11.80
12.0		10.25	10.10	10.05	9.95	9.90	9.80	9.80	9.70	9.60	9.50	9.40	9.35	9.25	9.25	9.25
14.0			8.30	8.25	8.15	8.10	8.00	7.95	7.85	7.75	7.75	7.65	7.55	7.50	7.45	7.45
16.0				6.95	6.85	6.80	6.70	6.65	6.55	6.45	6.40	6.35	6.25	6.15	6.10	6.10
18.0					5.85	5.80	5.70	5.65	5.55	5.45	5.45	5.35	5.25	5.15	5.10	5.10
20.0					5.10	5.05	4.95	4.85	4.75	4.70	4.65	4.55	4.45	4.40	4.30	4.30
22.0						4.40	4.35	4.25	4.15	4.05	4.00	3.95	3.85	3.75	3.65	3.65
24.0							3.80	3.75	3.65	3.55	3.50	3.40	3.35	3.25	3.15	3.15
26.0								3.30	3.20	3.15	3.10	3.00	2.90	2.80	2.70	2.70
28.0									2.95	2.85	2.75	2.70	2.65	2.50	2.40	2.30
30.0										2.55	2.45	2.40	2.30	2.15	2.05	1.95
32.0											2.20	2.10	2.00	1.85	1.75	1.65
34.0												1.80	1.75	1.60	1.50	1.35

NOTES: 1. The rated loads shown do not exceed 75% of tipping load with the machine on firm level ground, and are not less than 1.15 times over front stability stipulated by the mobile crane construction standards.

2. To calculate the maximum load that can actually be lifted, deduct weight of all lifting accessories, such as main hook, from figures shown above.

3. Working radius is the horizontal distance from the swing center to the center of gravity of a lifted load.

4. When the jib or the auxiliary jib is attached to the load to be actually lifted is the rated load minus the weight lifted below and the weight of the main and auxiliary hooks. Be careful that if the calculated load is less than 0.1ton, no crane operation is allowed.

Jib length (m)	6	9	12	15	Aux.Jib
Weight to be reduced (ton)	0.75	0.90	1.05	1.20	0.30

5. The counterweight is 17.3ton.

6. Be sure to fully extend the side frames before operating the machine.

7. Correlations between the number of hoist rope reeving, maximum rated loads, hook weights are shown in the table below.

Hook capacity (ton)	Hook weight (ton)	Maximum rated load(ton)							
		8	7	6	5	4	3	2	1
50.0	0.61	90.0	45.5	39.0	32.5	26.0	19.5	13.0	—
30.0	0.36				30.0	26.0	19.5	13.0	—
15.0	0.22						15.0	13.0	—
6.5	0.18								6.5